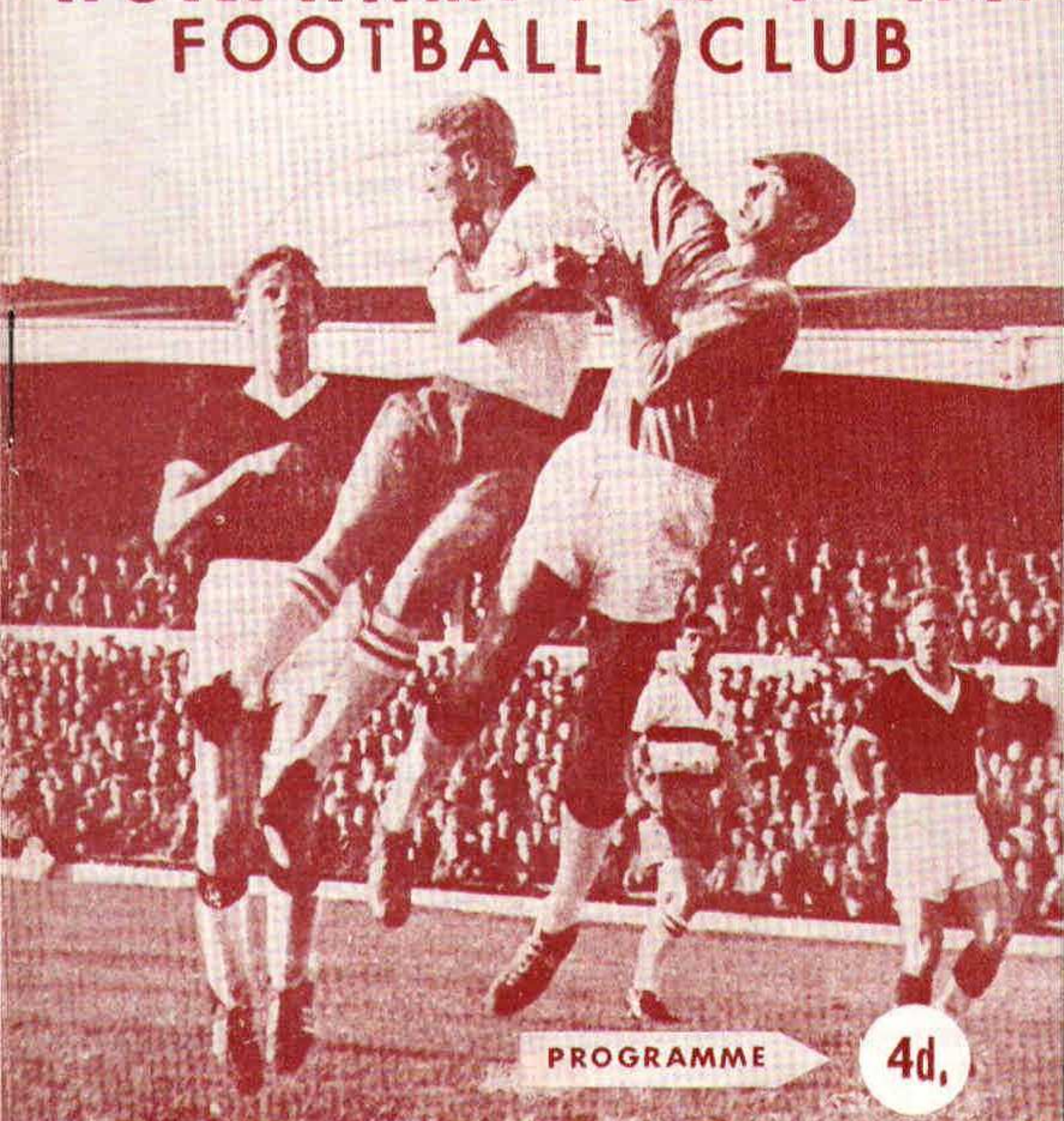


NORTHAMPTON TOWN FOOTBALL CLUB



PROGRAMME

4d.

Always on top of their form!

**TRAVIS & ARNOLD
LIMITED**

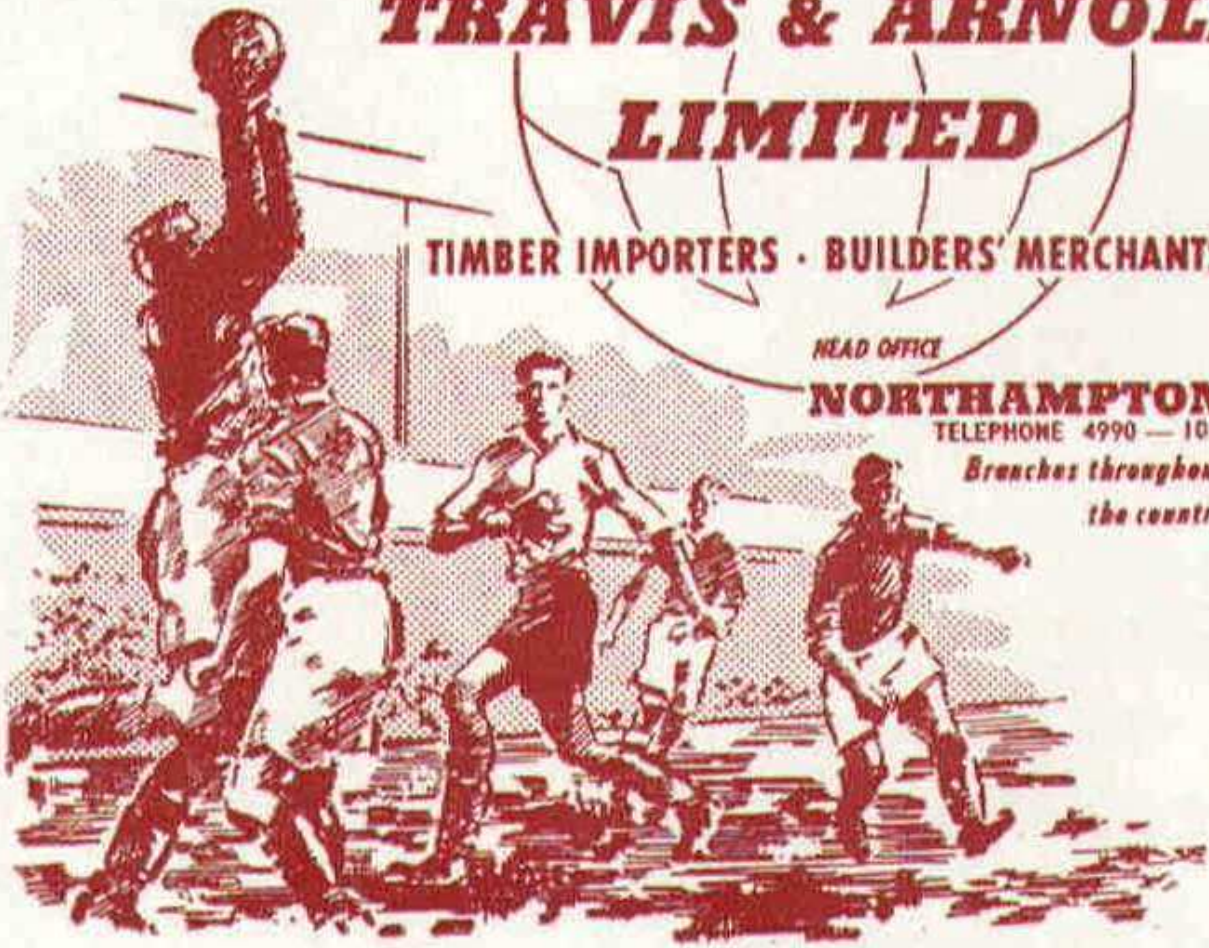
TIMBER IMPORTERS · BUILDERS' MERCHANTS

HEAD OFFICE

NORTHAMPTON

TELEPHONE 4990 — 10 lines

*Branches throughout
the country*



Northampton Town Football Club Limited

Registered Office : County Ground, Northampton. Tel. 31553

President : C. T. Cripps, M.B.E.

Directors : Messrs. F. J. York (Chairman),
C. E. Buller (Vice-Chairman), R. Brett, Dr. G. Hollingsworth,
E. P. Northover, W. R. Penn (Life Vice-President),
R. L. M. Saunders, A. Whatton and C. T. Wilson, O.B.E.

Hon. Medical Officer : Dr. James Orr.

Secretary : W. R. Osborne.

Manager : D. L. Bowen.

COBBLERS v. SWINDON TOWN

Football League, Div. III.

TUESDAY, MARCH 26th, 1963.

Kick-off 7.30 p.m.

Club Notes

As supporters will have noted, the Cobblers have at last been able to fit in all outstanding matches, and complete the programme for the rest of the season. For this we are grateful to the County Cricket Club for allowing us to use the County Ground well into May. Their co-operation is greatly appreciated by the Cobblers. It enables us to avoid the problem of fitting these matches into a programme that has already got two games a week right through April.

The three outstanding matches now fixed are : Tuesday, April 23rd v. Barnsley; Thursday, May 9th v. Carlisle; and Friday, May 24th, v. Hull City. All this means that, starting tonight against Swindon, the Cobblers have 10 home

HOME OR AWAY

you're on a
winner with —

ALL THE SPORTS
NEWS AND RESULTS
EVERY SATURDAY

THE
GREEN 'UN

SPORTS EDITION OF THE
CHRONICLE & ECHO



E. Sterry Ashby, F.A.L.P.A.

INCORPORATED AUCTIONEERS AND ESTATE AGENTS,
SURVEYORS, VALUERS,
AND PROPERTY MANAGERS.

4 & 5 GEORGE ROW
(Town Centre)
NORTHAMPTON.

Telephone : Northampton 4412 (4 lines).

ENNALS & CASTELL Ltd.

Agricultural Engineers and Ironmongers
Nuffield Distributors.

ST. PETER'S WAY
NORTHAMPTON.

Tel. Northampton 32593 (5 lines).

games to play. That represents a very hectic programme, and we hope the public will support the team in its bid to secure enough points for promotion. There are a series of keen tussles in prospect.

The promotion fight can rarely have been closer. For this year no team is away out in front, and seemingly assured of taking one Second Division place, as so often happens. Both promotion places are open, and are contested by a considerable number of teams. When some drop points and fall back a little, others rally and come back into the picture. Several have arrears to make up, yet a solid winning run could bring an outsider to the front.

All this is possible because the big arrears of fixtures to be made up this season mean that several leading clubs have to play each other, and points have to be lost one way or another. Injuries, or freedom from them, can also play a vital part. The Cobblers have been hit by injuries to Alec Ashworth and Bert Llewellyn for some weeks, and it is hoped we do not suffer any more serious ones in the remaining weeks.

But the club spirit is excellent, and despite last Saturday's defeat at Bristol City ground, we had previously won all three games while Alec Ashworth was out of the team. The Watford match was not so entertaining to watch as the game against Colchester four days previously. But when playing promotion opposition, the tactics do not always provide the most attractive play to watch. A win against promotion rivals is virtually worth four points, so the tendency is for defensive play to predominate, especially from the visiting side.

The Bristol defeat was disappointing, for at one time another win seemed on the cards. John Reid put the Cobblers ahead early on, and we went close many times. But the forwards could not get the ball in the net again, despite quality approach work. And lapses gave Bristol two of their goals, enabling them to get right back in the game and take the points.

WHATTON'S FOR WOOD

ALWAYS A HOME WINNER!

AFTER THE MATCH GO HOME TO A GOOD FIRE
WITH OUR LOGS.

This is to-day's Best Fuel Value.

Immediate delivery at 2/6 per bag. No orders taken under 4 bags.

E. WHATTON & SONS, HARTWELL, NORTHANTS.

Timber Merchants,

Tel. ROADE 233.

FOR YOUR

VEGETABLES, FRUIT, FLOWERS AND PLANTS

TRY OUR

MARKET STALL, No. 110—111, ROW J.

Fresh from our Own Farms.

TOMKINS of WILBY

35 NEWLAND, NORTHAMPTON.

Telephone No. 3851.

ALLISON'S RUBBER CO., Ltd.



For First-Class

SPORTS GOODS.

Club Secretaries send us your enquiries:—

43 ST. GILES' STREET, NORTHAMPTON.

Phone: N'ten 487.

PEN PICTURES OF SWINDON TOWN PLAYERS.

MIKE TURNER (goalkeeper).—Joined the Club whilst still in the Services from Dorchester Town. Took over in goal from O'Hara last season.

MAURICE OWEN (right-back).—The team captain and oldest member of the team. Formerly a centre-forward, has played in several representative games.

JOHN TROLLOPE (left-back).—A local boy on the ground staff from school. First team appearance when 16 years old in 1960-61 and ever-present last season.

KEITH MORGAN (right-half).—A strong attacking wing-half, who joined Swindon as a youth player from Westbury. Missed only three games last season through injury.

KEN McPHERSON (centre-half). — From Newport County in 1961. Player with a reputation for hard work. Formerly a centre-forward.

BOB WOODRUFF (left-half).—Local born player direct from Swindon Schoolboys' team. His performances have made him a target for several transfer offers.

MIKE SUMMERBEE (outside-right).—Born in Cheltenham, he is a product of the Swindon Youth policy. Another player wanted by several clubs.

ERNIE HUNT (inside-right).—Joined the club's ground staff from school. First team member at 16. Top goalscorer last year.

JACK SMITH (centre-forward).—Joined the Robins from Watford during 1960-61 close season. A player with the ability to get the unexpected goal.

CLIFF JACKSON (inside-left).—Swindon born, joined the club direct from school. In first team at the age of 17. Has a very powerful shot.

ARNOLD D'ARCY (outside-left).—Joined the club in 1956 from Wigan Athletic. In spite of his size he is a strong forceful winger with a powerful shot.

COLLINGWOOD GARAGE Ltd.

149-155 ABINGTON AVENUE, NORTHAMPTON.

Phone 32076.

Repairs by skilled Mechanics.

Engines Exchanged.

High Pressure Greasing and Servicing by skilled men.

Order your new Hillman, Austin, Ford, Standard, Triumph or
any other make. Our Repairs are better and quicker.

Cars bought, sold or exchanged.

" THE YELLOW GARAGE."

ALWAYS VISIT

MANNING'S (Newsagents)

210 ABINGTON AVENUE

LTD.

when Coming to the County Ground.

FOR QUICK SERVICE.

SWEETS

CHOCOLATES

CIGARETTES

FRAMES' FOR TRAVEL

RAIL TICKETS FOR ANY JOURNEY.

AIR BOOKINGS.

OCEAN PASSAGES.

Hotel Accommodation.

London Theatre Seats.

Let us arrange your next Party Outing. Booking Agents for United
Counties' Excursions. Tours and Express Coach Services.

FRAMES' TOURS Ltd.

21 GOLD STREET and 8a GEORGE ROW,

(Tel. 530)

NORTHAMPTON

(Tel. 2178)

Offices also at : Wellingborough, Kettering, Corby,
Peterborough, Bedford, etc.

FOOTBALL LEAGUE — DIVISION III.

	P	W	D	L	F	A	P
Peterborough United	35	16	9	10	80	58	41
Swindon Town	32	15	10	7	64	41	40
Northampton Town	31	15	8	8	65	46	38
Coventry City	30	13	12	5	58	43	38
Bournemouth	32	13	11	8	44	31	37
Notts County	32	15	6	11	49	53	36
Wrexham	32	15	5	12	63	61	35
Southend United	31	14	7	10	53	52	35
Hull City	31	14	6	11	56	51	34
Port Vale	30	13	7	10	45	40	33
Queen's Park Rangers	30	13	6	11	61	49	32
Watford	31	14	4	13	64	57	32
Millwall	30	10	11	9	56	56	31
Bristol City	32	10	10	12	65	62	30
Shrewsbury Town	32	11	8	13	60	63	30
Colchester United	31	9	10	12	50	64	28
Bradford	32	9	10	13	50	64	28
Brighton	36	9	10	17	49	68	28
Bristol Rovers	31	11	5	15	49	59	27
Reading	31	11	4	16	56	55	26
Barnsley	30	9	8	13	39	46	26
Crystal Palace	30	8	9	13	33	44	25
Halifax Town	30	6	10	14	38	65	22
Carlisle United	30	6	8	16	36	61	20

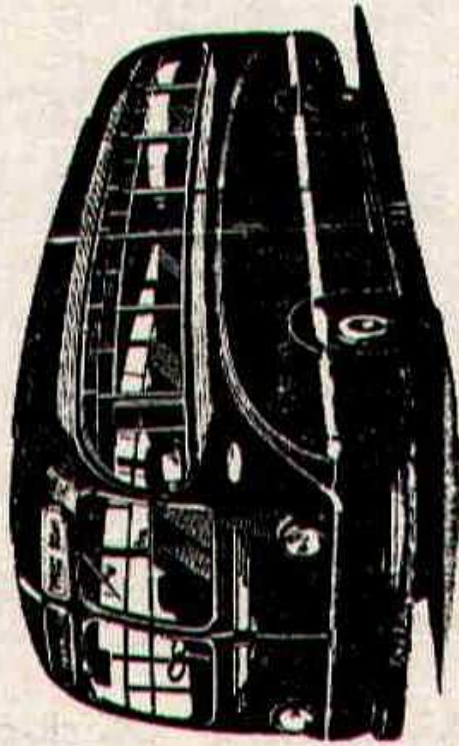
Next Home Match :—

COBBLERS v. READING

Football League, Div. III.

SATURDAY NEXT, MARCH 30th. Kick-off 3.0 p.m.

YORK BROS. (Northampton) LTD.



- Coaches for—
- * Theatre Parties
 - * Works Outings
 - * Evening Trips
 - * Sports Fixtures
 - * and all occasions.

We are pleased to arrange all Catering, Tickets, etc.

“WANT A COACH? —

GO TO YORKS!”

Tel. 5964

NORTHAMPTON TOWN

BRODIE

²
FOLEY

³
EVERITT

⁴
LECK

⁵
BRANSTON

⁶
KURILA

⁷
HAILS

⁸
ASHWORTH

⁹
LARGE

¹⁰
REID

¹¹
LINES

Referee : G. N. HARTLEY
(Southport)

Linesmen : C. S. ALLATT (Birmingham).
(Yellow Flag)
R. EVANS (Leicester).
(Red Flag)



7 HAILS 8 ASHWORTH 9 LARGE 10 REID 11 LINES

Referee : G. N. HARTLEY (Southport)
 Linesmen : C. S. ALLATT (Birmingham) (Yellow Flag)
 R. EVANS (Leicester) (Red Flag)



D'ARCY 11 JACKSON 10 SMITH 9 ATKINS 8 SUMMERBEE 7
 WOODRUFF 6 McPHERSON 5 MORGAN 4
 TROLLOPE 3 DAWSON 2
 TURNER
 SWINDON TOWN



OF IMPORTANCE

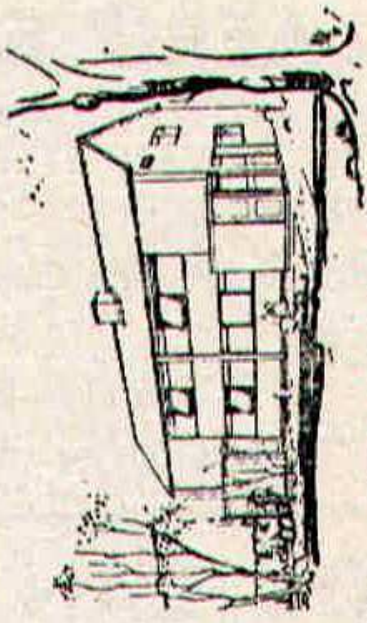
TO ALL HOME SEEKERS

We are sure we have the design and the estate you are looking for.

CALL OR WRITE FOR DETAILS :—

WILSON'S (Builders N'pton) LTD.

SALES OFFICE — 63 SHEEP STREET Tel. 2771/5



NEW MAISONNETTES

AERO CONTROLS Ltd.

Require the Services of—

CAPSTAN SETTERS CAPSTAN OPERATORS
CENTRE LATHE OPERATORS TOOLMAKERS MILLERS, Esc.

First-class Working Conditions. High Rates of Pay. Overtime.
Canteen Facilities.

Apply—**INDUSTRIAL ESTATE,**
WEEDON ROAD, NORTHAMPTON.

YOU CAN MAKE MOVIES— —WITH SNAPSHOT EASE!

Capture your happy moments in large-as-life action
Wonderful colour! With a "Brownie" Movie Camera
it's as easy as taking snapshots—and surprisingly economical.
May we tell you more about this exciting new hobby?

New "BROWNIE"
8 Movie Camera
only £12 7s. 0d.

SEE IT AT—



BEFORE OR AFTER THE MATCH VISIT THE

GAUMONT RESTAURANT

GAUMONT THEATRE, MARKET SQUARE.

Morning Coffee. Luncheons. Teas. High Tea. Evening Grills.

Popular Prices and Fully Licensed.

PARTIES CATERED FOR.

Tel. Northampton 3349.

FIXTURES 1962-63

1962 THIRD DIVISION

Aug. 21	Bristol Rovers (11,649)	2	2
25	Swindon (12,962)	3	2
28	Bristol Rovers (15,661)	2	0
Sept. 1	Peterborough (16,064)	2	3
8	Barnsley (7,599)	1	1
11	Wrexham (9,555)	8	0
15	Colchester (5,512)	2	2
17	Hullfax (13,975)	7	1
22	Queen's Pk R (15,469)	1	0
24	Halifax (3,955)	3	1
26	Colchester (F.L. Cup—R. 2) (7,771)	2	0
29	Hull City (9,536)	0	2
Oct. 2	Crystal Palace (14,204)	3	1
6	Bournemouth (12,199)	2	2
10	Crystal Pal. (13,319)	2	1
13	Coventry C. (21,985)	1	1
16	Preston N.E. (12,418) (F.L. Cup—R. 3)	1	1
20	Bradford (12,634)	3	1
24	Wrexham (18,619)	4	1
27	Watford (18,829)	2	4
29	Preston (7,040) (F.L. Cup—Replay)	1	2
Nov. 3	Torquay U. (11,844) ((F.A. Cup—1st Rd.)	1	2
10	Reading (7,316)	1	2
17	Port Vale (8,718)	0	0
Dec. 1	Millwall (10,198)	1	1
8	Southend United (8,299)	1	5
15	Carlisle United (3,933)	2	1
28	Notts County (6,614)	1	2
Feb. 9	Queen's Pk. R. (14,220)	3	1
23	Bournemouth (10,484)	0	3
Mar. 2	Coventry City (18,717)	0	0
9	Bradford (8,551)	3	2
12	Colchester Utd.	3	1
16	Watford (12,230)	1	0
23	Bristol City (9,642)	1	3
26	Swindon Town	..	H
30	Reading	..	H
Apr. 2	Notts County	..	H
6	Port Vale	..	A
8	Bristol City	..	H
12	Brighton	..	A
13	Shrewsbury Town	..	H
16	Brighton	..	H
20	Millwall	..	A
23	Barnsley	..	H
27	Southend United	..	H
May 1	Shrewsbury Town	..	A
9	Carlisle United	..	H
11	Peterborough Utd.	..	A
24	Hull City	..	H

FOOTBALL COMBINATION

1961

Aug. 18	Bristol Rovers	1	3
25	Peterborough (1,610)	1	2
Sept. 1	Luton Town	2	6
8	Nottingham F. (1,370)	2	1
15	Ipswich Town	3	3
22	Norwich City	3	0
29	Tottenham (2,416)	3	2
Oct. 6	Colchester United	4	3
13	Arsenal	2	4
20	Shrewsbury Town	2	4
27	Cardiff City (985)	3	1
Nov. 3	Mansfield Town	0	2
10	Plymouth A. (1,101)	0	0
17	Leicester City	0	2
24	Notts County (1,298)	3	2
Dec. 1	Arsenal	1	3
8	Colchester Utd. (705)	4	2
15	Bristol Rovers (1,157)	0	4
22	Peterborough United	5	2
Feb. 16	Tottenham Hotspur	1	1
Mar. 2	Cardiff City	1	4
7	Luton Town (1,188)	3	0
16	Plymouth Argyle	3	3
19	Ipswich Town (1,526)	1	3
21	Mansfield Town (707)	4	2
23	Leicester City (1,280)	1	1
30	Notts County	..	A
Apr. 6			
13			
15	Crystal Palace	..	H
20	West Ham United	..	H
27			
	Norwich City	..	H
	Shrewsbury Town	..	H
	Notts Forest	..	A
	West Ham United	..	A
	Crystal Palace	..	A

Copyright of The Football League, Ltd.,
and not to be reproduced without permission.

SINGER Distributors for the County of Northants.

FORD Retail Dealers.

WESTONIA GARAGE Ltd.

WESTON FAVELL, NORTHAMPTON.

Phone Northampton 32376-7-8.

AREA DEALERS for DODGE TRUCKS.

STANDARD — Appointed Dealers — TRIUMPH

TONY CLAYPOLE, Sales Representative.

CAR SLEEPER SERVICE

Sutton Goldfield to Stirling and Inverness

Thursday, 11th April, then Each Thursday, 2nd May to 3rd Oct.

Each Sunday, 5th May to 29th September.

Each Tuesday, 21st May to 10th September.

Full details from District Passenger Manager,
43 Smallbrook, Ringway, Birmingham, 3.

BRITISH RAILWAYS

Visit the

Sports Specialists—

BOWEN & COLLINS

(Sports) LTD.

11 GOLD STREET, NORTHAMPTON

(Adjoining Grand Hotel).

Tel. 1257.



OUR RESERVES

The Reserves played four games in eight days last week. After a 3—3 draw at Plymouth on the Saturday, they lost 3—1 to an experienced Ipswich side on Tuesday. But Thursday saw them back to winning ways with a 4—2 success over Mansfield. Last Saturday they draw 1—1 with Leicester. The City included some well-known players, including right-winger Cheeseborough,, who put them ahead from 30 yards.

John Linnell equalised in the second-half. Our boys had much more of the play but could not score again. The general form, though, was very pleasing. Don Martin (2), Billy Best and Linnell scored against Mansfield in a match we controlled, apart from a brief spell in the second half. But the side did not strike its best form against Ipswich, neither did it get any luck. And it was only in the last 15 minutes that Ipswich scored the deciding goals. Tom Robson scored for us.

At Plymouth a strong rally earned a point. We were two down in 23 minutes, and then 3—1 behind near the interval. But the boys would not accept defeat and fought back with great spirit and persistence. The goals came from Martin, Colin Sharpe and Best. Our young attack has earned much praise this season and looks a fine insurance for the future.

HALF-TIME SCOREBOARD

ALWAYS A WINNER—

A SAVINGS ACCOUNT WITH

Northampton & Midlands
BUILDING SOCIETY
TEL. No. 902

Branches :

Bletchley, Corby and
20 Kingsley Park Terrace.

60 GOLD STREET,
NORTHAMPTON.



BRIDGE STREET,
NORTHAMPTON.

Get **BETTER** motoring

—GET

MULLINER

MOTORING

WITH THE FINEST
GUARANTEED USED CARS

County Distributors :
HUMBER HILLMAN
SUNBEAM

Tel. 907 (5 lines).

ARTHUR MULLINER Ltd.

Claret & White Development Scheme

All the monies which our supporters have helped to raise are banked each week. The ever increasing capital sum is subject to interest. On no account will any of this cash be passed over ; only to foot bills for improvements for the comfort of our followers.

WINNING NUMBERS AND RESULTS

SATURDAY, MARCH 23rd.

1st Prize, No. 38371	£8	8	0
2nd Prize, No. 27023	£6	6	0
3rd Prize, No. 35689	£4	4	0
4th Prize, No. 30301	£2	1	6
Towards new objective £21.			Total this season	£2,711.	
			Total in hand	£5,961.	

Supporters Club Notes

With the visit of our opponents this evening, it is with pleasure that we recall the comradeship of football supporters. When our favourites played Swindon away, four of our schoolboy supporters hitch-hiked there and back. To attain this they had a lift to Oxford by a Kettering supporter, whilst the whole of the return journey was accomplished by being given a ride in one of this organisation's private hire buses.

**DON'T FORGET THE CHANT —
C O B B L E R S**

A CERTAIN "DRAW"

QUALITY



B E E R S

ON SALE AT THE LICENSED BARS

APPEARANCES

	F.A. Cup	F.L. Cup	League		F.A. Cup	F.L. Cup	League
Brodie ...	1	3	31	Sanders ...	1	3	15
Foley ...		3	31	Hails ...			11
Woollard ...	1	2	15	Holton ...	1	3	21
Cockcroft ...	1	1	5	Ashworth ...	1	3	25
Everitt ...	1	1	13	Smith ...			5
Leck ...	1	3	31	Large ...			5
Branston ...	1	3	30	Martin ...			2
Carr ...			1	Llewellyn ...			1
Kurila ...	1	2	26	Reid ...	1	2	26
Mills ...			12	Etheridge ...		1	2
				Lines ...	1	3	30

SCORERS

Ashworth ...	1	20	Leck ...	2
Holton ...	1	14	Sanders ...	2
Lines ...	1	14	Everitt ...	1
Reid ...	1	5	Hails ...	1
Large ...		4	Opponents	2

RESERVE TEAM SCORERS

Martin	15	Smith	3
Robson	9	Linnell (J.)	2
Everitt	7	Etheridge	1
Best	6	J. Hall	1
Carson	3	Mills	1
D. Woods	3	Sanders	1
				Sharpe	1

Published by Northampton Town Football Club, and printed by Archer & Goodman, Wellington Street, Northampton.

FRED TOMPKINS
MOTORS LIMITED

*“ A Winner Every Time for your Motoring
Requirements ”*

Billing Road Garage, Northampton

PHONE 34455-6

Stanley Driver School of Motoring

**5, ADELAIDE TERRACE
N O R T H A M P T O N**

Telephone 3236

ARCHER & GOODMAN

PRINTING AND STATIONERY

— FOR EVERY PURPOSE —

36-42 Wellington St., Northampton

Phone 359

GROCERIES & PROVISIONS

QUALITY CIVIL'S SATISFACTION

18 Abington Avenue, 29/32 Harborough Road, 76 St. Leonard's Road,
1 Balmoral Road, 8 Kingsthorpe Hollow, 53/54 Barrack Road,
237/9 Birchfield Road E., 132 Wellingborough Road, 2a London Road,
192 Kettering Rd., 340 Wellingborough Rd., 64/66 Kingsley Pk. Ter.

S A X B Y

**SHOPPERS WIN THE
BIGGEST DIVIDENDS**

Specialists in PORK PIES, SAUSAGES, COOKED MEATS
and PROVISIONS, and of course DAIRY FED PORK.

11 ABINGTON STREET

London, St. Albans, Luton, Bedford and Wellingborough.

"Play Boy"
famous sport shoes

